

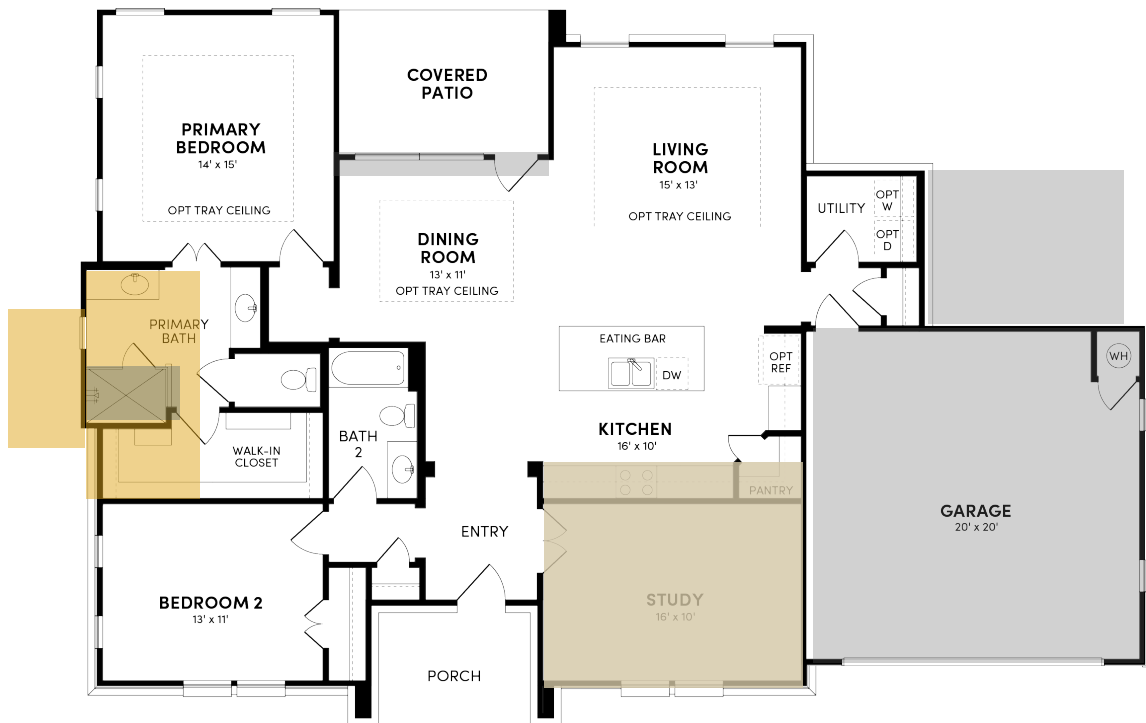
Brookfield Residential

Welcome to the Trevino.

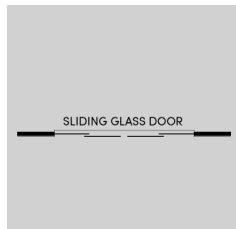


Floor Plan Details

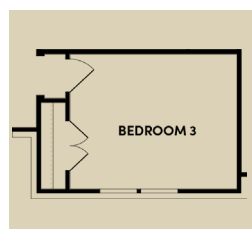
1,787 sq. ft. | 2-3 bedroom | 2 bath | Study | 2 car-garage



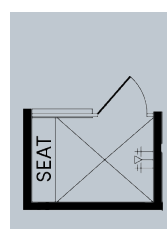
Additional Options:



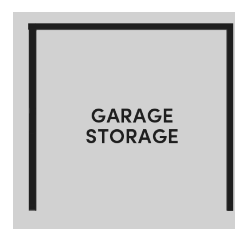
Sliding Glass Door



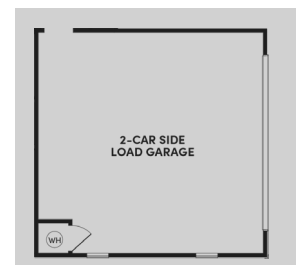
Bedroom 3



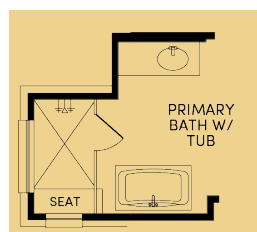
Primary Shower Seat



Garage Storage



Side Entry Garage



Primary Bath w/ Tub



Texas Hill Country



Modern Prairie



Modern Farmhouse



BrookfieldTX.com | 512-928-4877

The total number, layout, design and location of homes; unit mix; and the location, design and layout of recreational facilities may be changed due to a number of circumstances, including governmental requirements and market demand. Dimensions are approximate in nature and are not intended for final reference. Brookfield Residential and its affiliates reserve the right to change homesites, floor plans and home prices and make modifications in materials and specifications at any time without prior notice. © 2023 Brookfield Residential Properties ULC. All rights reserved. REV. FEB. 2024