



SAVANNAH

AUDIE MURPHY RANCH



golden

LIFE HERE IS NATURALLY BRIGHTER

Savannah brings a refreshing outlook and balance to home. Great rooms and bonus rooms put a spotlight on family living, plus there's plenty of space so you can plan for the future. Covered outdoor rooms were designed to entertain and celebrate. Connected Home technology adds convenience to everyday life. Take the fresh approach at Savannah, we've been expecting you.



fresh

home

styles



SAVANNAH
AUDIE MURPHY RANCH



Audie Murphy Ranch is action-packed, so get ready for weekend leisure and playful adventures. This Meniffee community features a variety of resort-style amenities. Cool off in the swimming pool at the Ranch House, hit the trail or tennis courts at Spirit Park or pack a family picnic on a sunny day. Life is better when it's filled with fun and games. Welcome to the neighborhood.





2,718 Square Feet • 3 - 4 Bedrooms • 2 - 2.5 Baths • Bonus Room
Grand Dining Room • Covered Outdoor Room • Expansive 3-Bay Garage
Optional Den at Bonus Room • Optional 4th Bedroom at Bonus Room
Optional Powder at Walk-In Pantry • Optional Flex Room at Grand Dining



1R
SPANISH



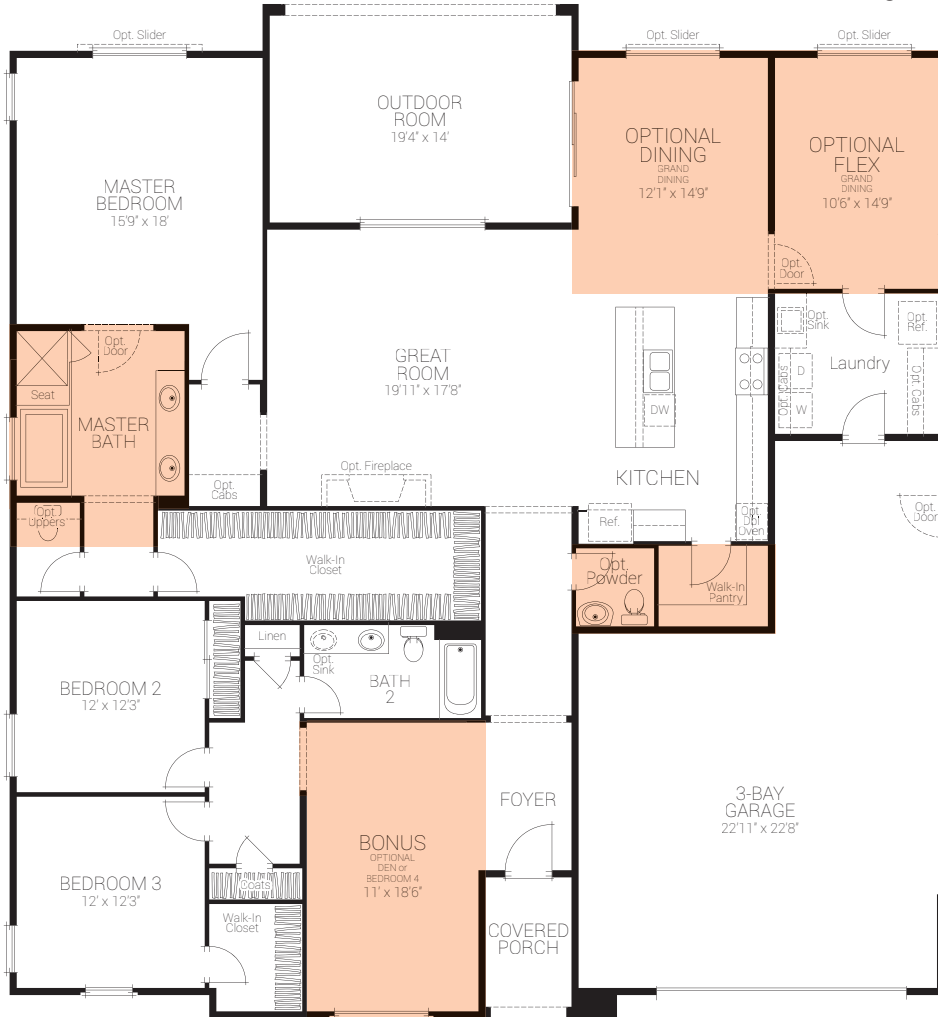
1BR
FARMHOUSE



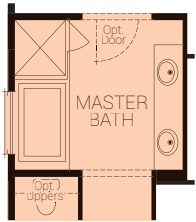
1CR
RANCH
(AS MODELED)



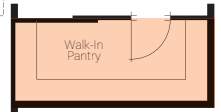
Included Grand Dining



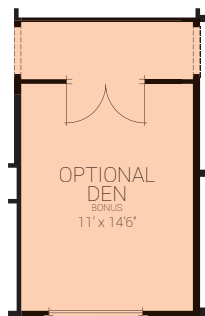
Single-Level Living (As Modeled)



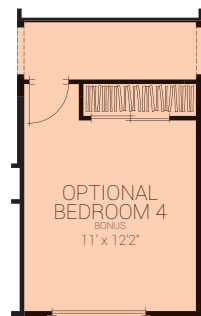
Included Master Shower Without Seat



Included Walk-In Pantry at Optional Powder



Optional Den at Bonus Room



Optional Bedroom 4 at Bonus Room

All square footage is approximate. Renderings are artist's conception. Stated dimensions are approximate estimates and not intended for space planning purposes. Decks, windows and doors vary by elevation. See Brookfield representative for details.





2,946 Square Feet • 4 - 5 Bedrooms • 2 - 2.5 Baths • Bonus Room
Covered Outdoor Room • Expansive 3-Bay Garage • Optional Den at Bonus Room
Optional 5th Bedroom at Bonus Room • Optional Powder at Master Walk-In Closet



2A
SPANISH
(AS MODELED)



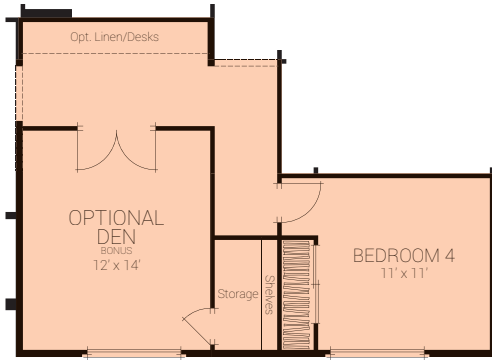
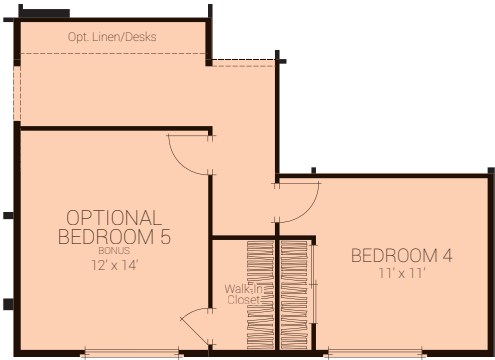
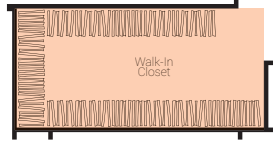
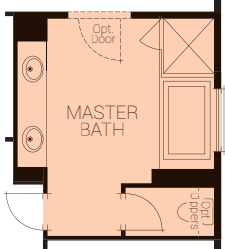
2B
FARMHOUSE



2C
RANCH



Single-Level Living (As Modeled)



All square footage is approximate. Renderings are artist's conception. Stated dimensions are approximate estimates and not intended for space planning purposes. Decks, windows and doors vary by elevation. See Brookfield representative for details.





3,423 - 3,492 Square Feet • 5 - 6 Bedrooms • 3 - 4 Baths
Flex Room • Bonus Room • Tech Loft • Covered Outdoor Room
Expansive 3-Bay Garage with Optional CA Garage Door • Courtyard Entry
Optional 6th Bedroom and 4th Bath at Bonus Room & Storage



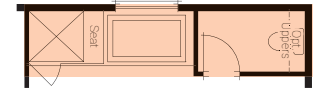
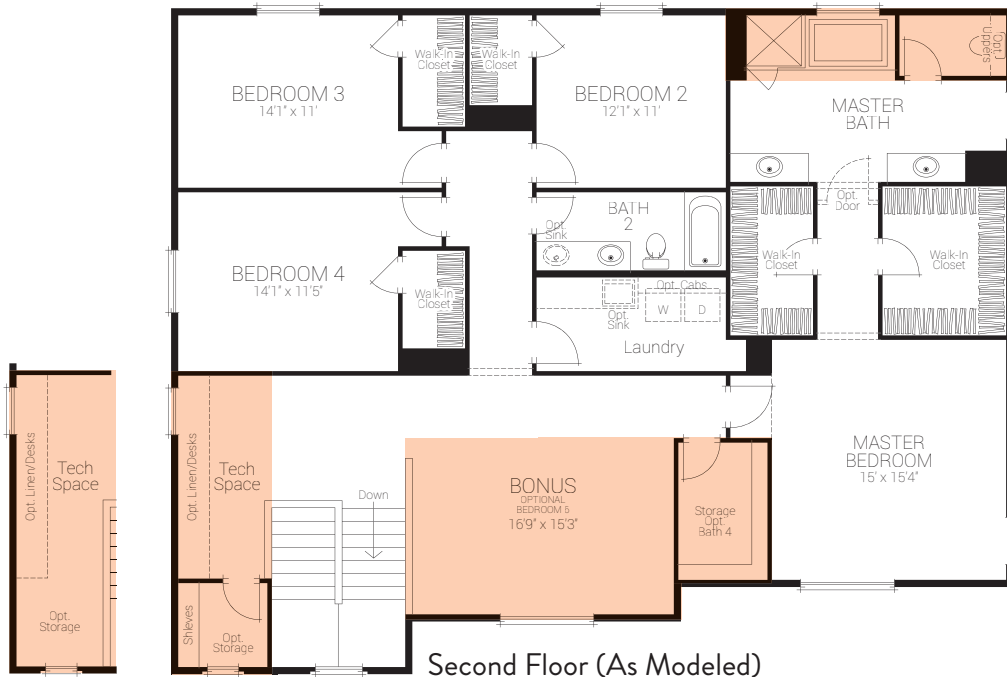
34R
SPANISH



3BR
FARMHOUSE
(AS MODELED)



3CR
RANCH

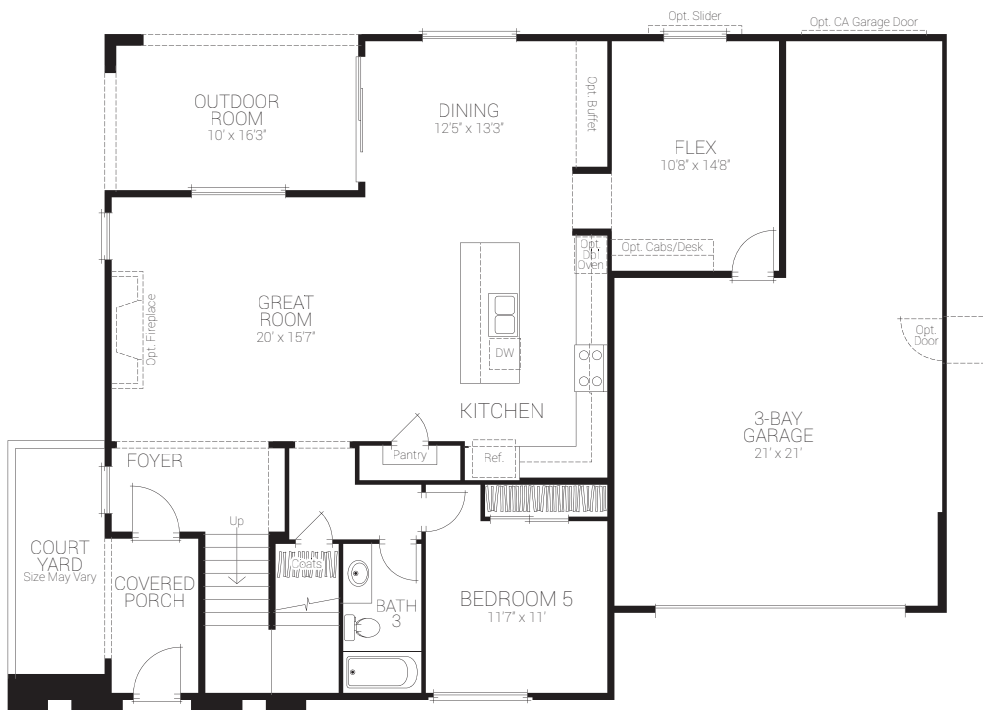


Optional Tile Master Shower with Seat

Included Tech Space/
Optional Storage



Optional Bedroom 6/Bath 4
at Bonus Room & Storage



First Floor (As Modeled)

All square footage is approximate. Renderings are artist's conception. Stated dimensions are approximate estimates and not intended for space planning purposes. Decks, windows and doors vary by elevation. See Brookfield representative for details.



included FEATURES

BEAUTIFUL EXTERIORS

- A charming street scene comprised of beautifully detailed Spanish, Farmhouse and Ranch inspired architecture
- Decorative exterior light fixtures (varies by elevation) and illuminating address plates
- Covered outdoor rooms to expand your indoor/outdoor living experience
- Embellished architectural details including decorative exterior shutters, stone veneer and/or decorative tile (varies by elevation)
- Insulated steel roll-up garage door (varies by elevation). Ranch elevations to include sleek glass windows.
- Inviting and low-maintenance 8' entry doors in painted finish with Schlage® Smart Sense matte black hardware

MODERN KITCHENS

- Stainless steel Whirlpool appliance package includes:
 - 30" gas range with 4 burners and single oven
 - 30" built-in microwave/hood above range
 - Multi-cycle dishwasher
- White thermofoil cabinetry, adjustable shelves, easy-clean white laminated interiors, smooth-glide drawers and brushed nickel knobs
- Granite countertops with 6" backsplash and full-height splash behind cooktop available in two colors: New Caledonia or Pebble Beach
- Stainless steel Amerisink® under-mount sink with Delta® Collins single handle pull-out faucet in polished chrome
- Convenient roll-out trash & recycling cabinet with two bins

BRIGHT LIVING SPACES

- Vinyl flooring in entry, kitchen, kitchen pantry, laundry and bathrooms; carpet in all remaining areas
- Decorative door casings and baseboards throughout
- Two-panel interior doors with Schlage® door hardware in matte black finish
- Spacious master bathrooms feature luxurious soaking tub and shower with glass shower enclosure, elongated toilet, cultured marble countertops in matte white with 4" backsplash and dual Vortens® sinks with Delta® center-set faucets in polished chrome
- Secondary bathrooms feature cultured marble countertops in matte white finish with 4" backsplash and Vortens® undermount sink with Delta® center-set faucet in polished chrome
- Convenient laundry rooms feature gas/water hookup, optional cabinetry, optional sink and optional 2nd refrigerator (at select plans)

TECHNOLOGY & ENERGY EFFICIENCY

- Pre-plumb conduit for optional solar panels
- USB outlet at Master Bedroom offers a convenient way to charge your device
- QuiteCool® whole house fan system improves upon the principle of ventilation cooling with savings of up to 50% - 90% off traditional cooling methods such as A/C
- HVAC system with Wi-Fi compatible Honeywell® Lyric thermostat
- Technology pre-wiring with Category 5 data to allow for phone lines and high-speed data connections
- Modern tankless water heater with direct vent includes hot water recirculation pump with convenient push buttons at master bath and kitchen to activate hot water

personalize your home

With the guidance of the Brookfield Studio design professionals, you may choose from a host of optional upgrades to personalize your new home, including flooring, countertops, cabinetry, appliances, electrical, audio visual and finish carpentry to make your home uniquely yours.

connected home

Your new home features the latest home automation products such as Schlage® Sense Bluetooth enabled front door lock, Lutron® light switches (select locations), wireless access point (WAP) for enhanced wireless connectivity and Honeywell® Lyric T6 thermostat. These products work with the Apple® HomeKit app in iOS and offer a simple, secure and convenient way to control your home from anywhere.



CREATING THE *best places* TO CALL HOME

BROOKFIELD RESIDENTIAL SOUTHERN CALIFORNIA LOS ANGELES

a division of Brookfield Residential, is committed to being more than a homebuilder. We strive to create the best places to call home.

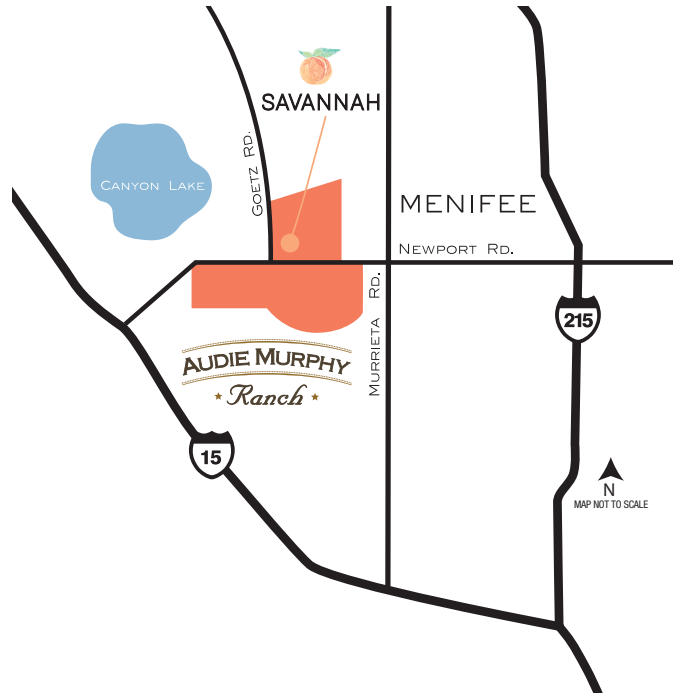
The Brookfield Residential Southern California Los Angeles team has the passion, the expertise and the local knowledge to craft homes and neighborhoods that speak to homebuyers at every stage of life. We are an award-winning homebuilder and industry leader with an exceptional reputation for quality, design, and customer service.

Brookfield Residential Properties Inc. is a leading land developer and homebuilder in North America. We entitle and develop land to create master-planned communities, sell lots to third-party builders, and operate our own home building division. We also participate in select, strategic real estate opportunities, including infill projects, mixed-use developments, and joint ventures.



BrookfieldResidential.com





24477 Diablo Way
Menifee, CA 92584
844.391.8151

BrookfieldResidential.com